



Bluestem NEWS

BLUESTEM
ELECTRIC COOPERATIVE, INC.
www.bluestemelectric.com
March 2006

614 E Hwy 24
P.O. Box 5
Wamego, Kansas 66547
Phone (785) 456-2212

524 Dexter
P.O. Box 513
Clay Center, KS 67432
(785) 632-3111

It's Almost Time to Attend Bluestem's Annual Meeting

Master door prize is \$300 cash and 30 other door prizes will be drawn for at the Annual Meeting.

Attend and WIN!

The Annual Report will be mailed later this month.



Wamego Middle School
Wamego, Kansas
March 27, 2006
at 7:30 p.m.

Lightning & Surge Suppression Spring Special *Installed for just \$34.95*

With spring lightning and thunderstorms soon upon us, why not take advantage of a program that will protect your investments from Mother Nature?

Bluestem Electric Cooperative is running a spring special on the installation of lightning and surge ring to protect your home and certain electrical appliances and equipment from lightning and power surges. The cooperative is offering you an invitation to sign up for the Power Quality Plus Program. Here's how easily we can begin the service for you:

- The lightning and surge protection device, installed at your electric meter will provide protection from lightning strikes and other major power surges for your home appliances. You lease the basic package for **only \$4.95 per month**, added directly to

your monthly power bill. Our technicians do the installation for a one-time fee of \$69.95. **However, if you act before May 31st, we'll drop the installation fee to \$34.95.**

- As part of the package, when you sign up you can also purchase an in-home kit of plug- surge protection products or individual surge products for individual appliances inside your home. These products will become your property at the time of purchase.

- This equipment comes with a warranty that has a maximum total coverage per site of \$50,000 and \$5,000 per appliance.

To lease the Power Quality Plus system or to get more information on this program, call us today at the Wamego Office at (785) 456-2212 / 800-558-1580, or at the Clay Center Office (785) 632-3111 / 800-297-8725.

ATTENTION: Manhattan's Upcoming Home Show



March 25-26, 2006 at the KSU Sports Complex

Home Show 2006 will be the only show in this area of its kind. This year marks the 21st anniversary of a MABA tradition.

Bluestem a Member of MABA in cooperation with the Manhattan Area Builders Association, will sponsor a booth at the Manhattan Home Show. Hours will be 10 a.m. - 4 p.m. on March 25th and 11 a.m. - 4 p.m. on March 26th. Bluestem, a member owned organization providing electrical services to its members' farms and homes, has offices in both Wamego and Clay Center. The cooperative will have member service representatives on hand to discuss with its members any number of things.

Such things as optional rates, energy saving techniques, automatic bank draft, level bill payment, billing, conservation measures, new construction applications,

heating and air-conditioning systems, water heating, energy audits, load control devices, outdoor lighting and any other services which are made available through the cooperative. Any suggestions and/or other services that you would like to see the cooperative provide will be considered!

The cooperative's booth will be located in the Brandeberry Building at the KSU Sports Complex located at the corner of College Avenue and Kimball Avenue, Manhattan, Kansas.

We will be giving away door prizes, so please stop by our booth (second booth on your left as you enter the Brandeberry Building), register for a door prize and visit with us about your farm and home electrical needs. This year, Bluestem's Master Door Prize will be an Electric Griddle. We hope to see you there!

Leave the Computer ON or OFF

Should I leave my computer on constantly, or turn it off?

Modern electronics devices were made to run 24/7 without "burning out." Turning a computer on and off shortens the life of the monitor and electronic parts inside the box. No, no, no! Turn it off when you're away for even a couple hours. You'll save hundreds of dollars on electricity, and those on-off cycles won't shorten the life of a modern computer. That debate has simmered for years, with conflicting advice and theories from amateurs and experts alike.

Everyone agrees that computers and monitors can gobble up plenty of electricity. Look at a typical personal computer with a 17-inch monitor. It's using about as much electricity as 4-40-watt light bulbs, that's 160 watts per hour and in 24 hours this amounts to 3,840 watts equal to almost 4 kWh's per day or 120 kWh's a month. Many households have two or more computers. Offices may have hundreds. In addition to direct use of electricity, computers and monitors produce heat. Home and office air conditioning systems consume electricity in removing the heat.

When working from a home office, for instance, the PC goes on around 6 a.m. and off around 11 p.m. The debate to turn off or leave on dates to the early days of personal computers in the 1980s. Experts thought that excessive switching off and on increased the stress on electronic components. Turn it on and tiny parts and connections between internal parts expand as the system warms-up. Turn it off and the parts contract as the system cools down. Some even compared it to the winter freeze-thaw cycles that crack highway pavement. However, there is little scientific information available on the issue.

Computers and monitors have changed since then and are among the most reliable of all devices. If a computer works the first day, it probably will run so long that you wish it would die so you have an excuse to buy a new one. Scientific information on the on-or-off question is available. One good source is a review of the research done by Oregon State University.

The results, in brief, conclude that you can save money on electricity without shortening a computer's life with

this approach: Turn your monitor off if you will be away for 15-30 minutes or longer. Shut down your computer at the end of the day unless there's a good reason to keep it on.

What's the risk of doing so? Consider, for example, the risk of damage to the hard disk drive, the most vulnerable component in computers. An average computer could be turned on and off 4 times a day, 5 days a week for 20 years before the hard disk drive is likely to fail, the review stated.

Remember to keep your anti-virus software up-to-date; that's definitely more important to your computer's health and longevity than whether you turn it off or keep it on.

If your computer is running slow, a simple reboot usually takes care of the problem. If you leave your computer on, turn off the monitor as it uses a lot of electricity. It's better to turn your computer off at night if you tend to have short power outages where you live. Computers don't like it when you just pull the plug on them and most operating systems insist on being shut down in a certain fashion.

ATTENTION: Need a Ride?

Free Annual Meeting Transportation

Do you need a ride to the Annual Meeting this year? The Bluestem Electric Cooperative will be offering rides to the Bluestem Annual Meeting being held at the Wamego Middle School on March 27, 2006.

If you live in Bluestem Districts 1 or 2, previously known as C&W, and would like a ride to your Annual Meeting, please fill out the information sheet below and return to our office by March 10, 2006.

The vehicles will leave at approximately 6 p.m. from the Bluestem office in Clay Center and return shortly after the completion of the Annual Meeting.

Bluestem Electric Cooperative, Inc.

Attention: Annual Meeting Planning Committee

P.O. Box 5

P.O. Box 513

Wamego, Kansas 66547

Clay Center, KS 67432

YES, I would like a free ride to the BEC Annual Meeting!

Indicate number of seats that will be needed _____

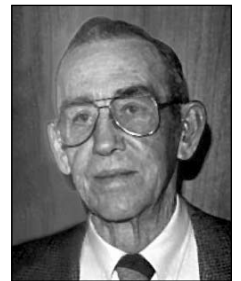
Name: _____

Address: _____

Home Phone: _____

In Sympathy

Lloyd A. Venneberg, 85, of Havensville, died Monday, January 23, 2006, at the Community Hospital in Onaga. He was born November 11, 1920, in the Bucks Grove community, the son of Arthur and Effie Elsie Kroth-Venneberg. He served on the PR&W Electric Cooperative Board of Directors for 30 years from 1960 to 1990.



Lloyd Venneberg

PR&W consolidated with C&W Electric Cooperative in 1999 to create Bluestem.

Lloyd married Marjorie F. Manuel July 30, 1950, at Bucks Grove United Methodist Church. He is survived by his wife, two sons, Robert Venneberg and wife, Jean, Onaga, and Frederick Venneberg, Lincoln, Nebraska; one daughter, Nancy Mattke and husband, Frank, Andover; two brothers, Claude Venneberg, McLean, Virginia and Clyde Venneberg, Solomon; three sisters, Mildred Wind, Colorado Springs, Colorado, Mary Fletchall, Hutchinson, and Elizabeth Davis, Topeka; seven grandchildren and one great granddaughter. Lloyd will be missed by his family and everyone within the electric cooperative community.