



BLUESTEM

ELECTRIC COOPERATIVE, INC.

www.bluestemelectric.com

December 2007

Bluestem NEWS

614 E Hwy 24

P.O. Box 5

Wamego, KS 66547

Phone (785) 456-2212

524 Dexter

P.O. Box 513

Clay Center, KS 67432

(785) 632-3111

Trustee Elections This Month

In the next few days you will be receiving a voting packet for the Trustee elections at Bluestem Electric Cooperative. Please be sure to follow directions and return your marked ballot in the envelope supplied.

Ballots must be post-marked no later than December 31, 2007, to be counted.

The teller committee will meet on January 9, 2008, at the Riley County High School at 7 p.m. to tabulate and certify the election results.

The results of the election will be printed in the February edition of the *Bluestem NEWS* located in the *Kansas Country Living* magazine.

Holiday Office Closings

**HAPPY
HOLIDAYS**

Merry Christmas
and a Happy New Year!
Our offices will be closed
on December 24-25
and January 1.

Hammond Retires After 47 Years

Dale Hammond began his career with C&W Electric Cooperative on January 2, 1960, after spending six months with the Kansas Army National Guard.

He worked for 28 years as a lineman for C&W and in June 1988 began work in Member Service. Hammond spent most of his time working with the wiring department. He continued in this position after the consolidation of C&W and PR&W to become Bluestem in 1999.

Hammond said he was thankful for the many years of steady employment, being able to work with good fellow employ-



Bluestem staff celebrated Dale Hammond's (left) retirement at the Clay Center Country Club on November 2. General Manager, Ken Maginley presented Hammond with one of his retirement gifts, an electric meter lamp at the event.

ees and all of the good times for himself and his family.

The Bluestem Electric Board of Trustees and employees wish him a long and happy retirement!

Annual Meeting Announcement

The Bluestem Electric Cooperative, Inc., Annual Meeting will be held on March 3, 2008, at the United Methodist Church Family Life Center at Fifth and Clark in Clay Center. The meeting will begin at 7:30 p.m.

Official notice of the

Annual Meeting will be mailed approximately 10 days prior to the meeting.

We hope that you will attend the Annual Meeting and take part in the business of Bluestem Electric Cooperative.

ATTENTION: High School Seniors

You could be eligible for either a \$250
or \$500 educational scholarship.

Please see your high school counselor for
details, or call Bluestem Electric Cooperative
at (785) 456-2212 or (785) 632-3111.

**Bluestem educational scholarship deadline
is December 14, 2007**

Prepare Now for Winter Storms

It's hard to predict the weather, but it's easy to prepare for it. Here's how to plan ahead for unavoidable power outages that can accompany winter storms.

- Listen to weather forecasts every day so you'll know when high winds or heavy snows or ice are on the way. High winds or heavy snows are most likely to affect power lines.

- Prepare an outage kit that contains: a battery-powered radio, fresh batteries, a flashlight, candles, matches, a wind-up clock, bottled water, and paper plates and plastic utensils.

- Keep a stock of canned food in your cupboard, along with a manual can opener. Consider buying a camp stove and fuel that you can use (outdoors only, please) if you can't cook on your electric stove.

- Tape Bluestem's outage numbers on your refrigerator so it will be handy if you must report an outage: Wamego – (785) 456-2212 or (800) 558-1580; Clay Center – (785) 632-3111 or (800) 297-8725.

- Pile a few extra blankets and sweaters together so you can find them easily if the heat goes off. Dress in layers to stay warm.

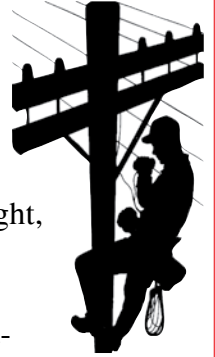
- Teach children to stay away from fallen or sagging power lines. They could be energized and dangerous, even if the power is out.

Our hope is that the weather will spare us and we won't have any outages this winter.

If we do, however, we'll restore service as quickly as possible. Just in case, though, it's better to be prepared than to sit in the dark.

Step Into Linemen's Shoes

Bluestem line crews climb utility poles at all hours of the day and night, in the worst of conditions.



Signs, posters, basketball rims, birdhouses or deer stands attached to utility poles can create serious hazards for our line personnel.

Sharp objects like nails, tacks, staples or barbed wire can puncture rubber gloves and other safety equipment, making linemen vulnerable to electrocution.

Please be respectful of co-op equipment and property. Fixtures not belonging to the cooperative or another utility will be removed by Bluestem line personnel.

---Clip and Save---

Bluestem Holiday Closings 2008

January 1....New Years Day

May 26.....Memorial Day

July 4...Independence Day

September 1.....Labor Day

November 27 & 28.....

.....Thanksgiving

December 25 & 26.....

.....Christmas